

Déchirer

by Patricia Urquiola



MU
TIN
A



Déchirer

by Patricia Urquiola

A highly innovative collection, not only for the patterns and textures, but also for the production system. Thanks to the CONTINUA technology, large slabs of the latest generation unglazed homogeneous porcelain stoneware are produced. Press-finished with 12 mm thickness, the tiles are perfectly rectified, single-work size and modular.

The colours and decorations, based on rich and pleasing ceramic effects, are simply obtained by the distribution of quality porcelain stoneware mixtures. The technical features are far superior to the limits required by international standards for tiles destined to heavy traffic areas. Déchirer is available in a 9 colours palette - Bianco, Nero, Grigio, Ecrù and Piombo in the textures Decor and Neutral for Déchirer collection, and Calce, Cemento and Cenere in the textures Net and Trace for Déchirer (la Suite) collection.



//

We share curiosity, the desire to question, not to take anything for granted and not to surrender. Déchirer comes from the idea of creating a surface inspired by the opacity and chromatism of concrete but also preserving its identity of ceramics.

Patricia Urquiola





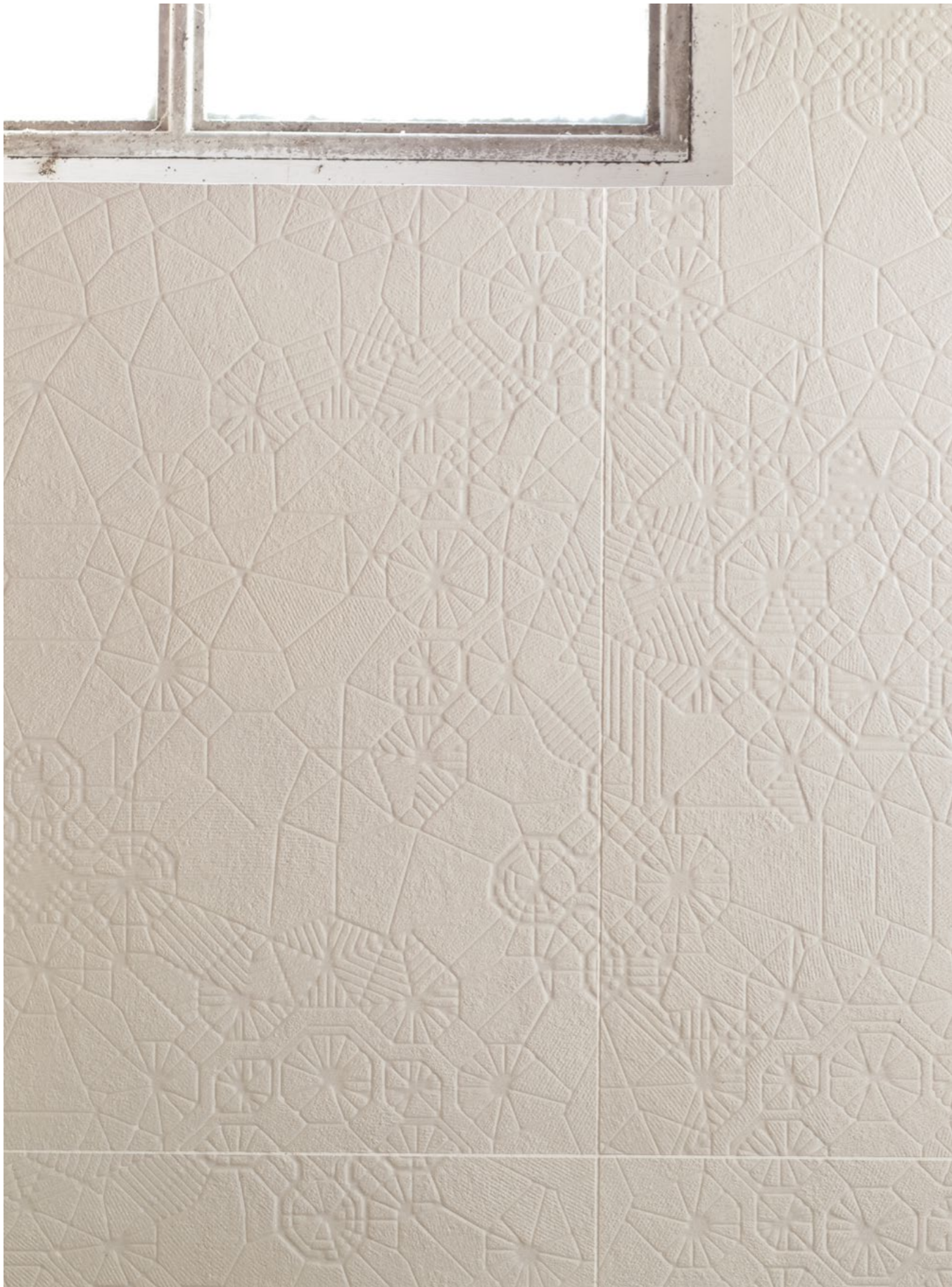


















Déchirer Decor, Neutral/Textures & Colours



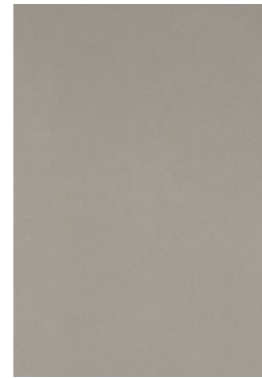
Decor Bianco



Neutral Bianco



Decor Grigio



Neutral Grigio



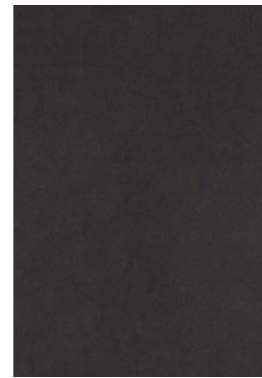
Decor Piombo



Neutral Piombo



Decor Nero



Neutral Nero



Decor Ecrù



Neutral Ecrù

Déchirer Decor, Neutral/Sizes

design Patricia Urquiola 2008

"A walkable footprint. Elegantly skid-resistant. These bas-reliefs in variable heights are not mere decorations, but they are what remain of torn memories."

production industrial

material unglazed homogeneous porcelain stoneware

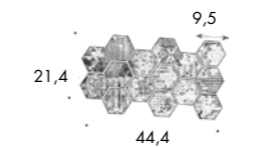
features squared and rectified slabs each one exactly the same as the others

thickness 12mm

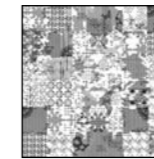
* nominal sizes

Modello depositato n° 001615790-001 – data di deposito: 25/09/2009
Registered design n° 001615790-001 – date of registration: 25/09/2009
Modello depositato n° 001615774-001 – data di deposito: 25/09/2009
Registered design n° 001615774-001 – date of registration: 25/09/2009

decor



mosaico random decor
*21,4-44,4 cm - *8" - 17"



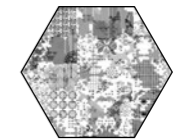
*120-120 cm
*47"-47"



*60-120 cm
*23 5/8"-47"



*60-60 cm
*23 5/8"-23 5/8"

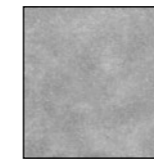


esagona
*120-120 cm
*47"-47"



esagona
*60-60 cm
*23 5/8"-23 5/8"

neutral



*120-120 cm
*47"-47"

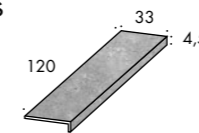


*60-120 cm
*23 5/8"-47"

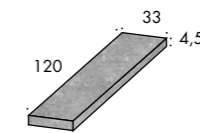


*60-60cm
*23 5/8"-23 5/8"

complementary pieces



gradone - step
*33-120-4,5 cm
*13"-47"- 7/8"



angolare - corner tile
*33-120-4,5 cm
*13"-47"-1 7/8"

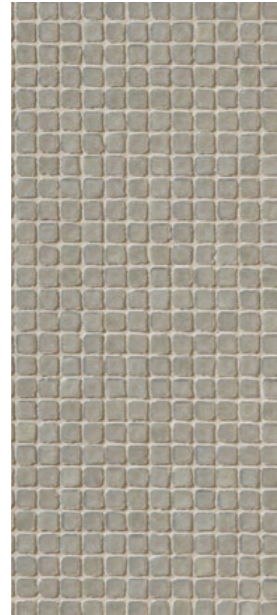


battiscopa - skirting
*3,8-60 cm
*2"- 23 5/8"

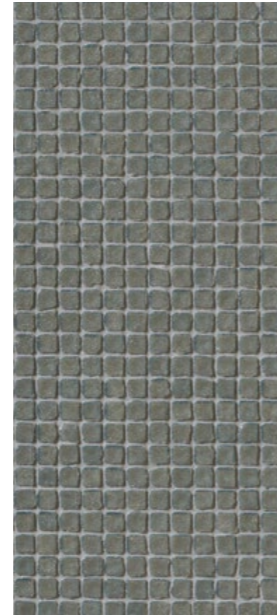
Déchirer Glass/Textures & Colours



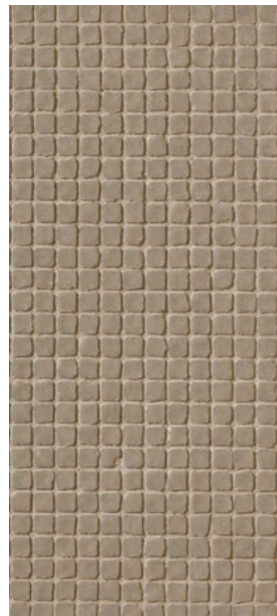
Glass Bianco



Glass Grigio



Glass Piombo



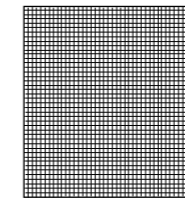
Glass Ecrù



Glass Nero

Déchirer Glass/Sizes

design	Patricia Urquiola	2009
	"I'm fascinated by the opportunity to get to an industrial product that shows apparent traces of stratification from the past, and to read light fingerprints that form a new identity. Déchirer absolute innovation is to attain a barely perceptible relief, which, for the first time, can be used for both floor and wall covering."	
production	artisanal	
material	recycled glass mosaic	
thickness	4,5mm	
*	nominal sizes	



*0,9-0,9 cm su rete 30-30 c
*11/32"-11/32" on net 12"-12"

Stucchi/Grouts	bianco 50	grigio 44	piombo 53
	nero 06	ecrù 52	

Déchirer (La Suite) Net, Trace/Textures & Colours



Net Calce



Trace Calce



Net Cemento



Trace Cemento



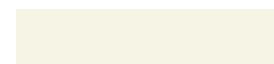
Net Cenere



Trace Cenere

Stucchi/Grouts

Calce 01



Cemento 60



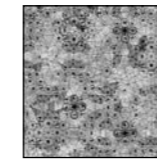
Cenere 62



Déchirer (La Suite) Net, Trace/Sizes

design	Patricia Urquiola	2010
	"I have expanded the basic Déchirer collection adding a new series, la Suite, and two new textures: the geometric abstract design of Net reveals its depth when it is skimmed over by the light; the surface of Trace becomes even more opaque, material, rendering the composition over large random areas."	
production	industrial	
material	unglazed homogeneous porcelain stoneware	
features	squared and rectified slabs each one exactly the same as the others	
thickness	12mm	
*	nominal sizes	
	<p>Modello depositato n° 001913062-0005 – data di deposito: 06/09/2011 Registered design n° 001913062-0005 – date of registration: 06/09/2011 Modello depositato n° 001912999-0014 – data di deposito: 06/09/2011 Registered design n° 001912999-0014 – date of registration: 06/09/2011</p>	

net



*120·120 cm
* 47"·47"

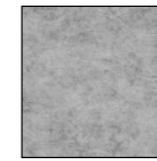


*30·120 cm
* 12"·47"



*60·60 cm
*23 5/8"·23 5/8"

trace



*120·120 cm
* 47"·47"

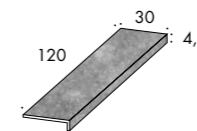


*30·120 cm
* 12"·47"

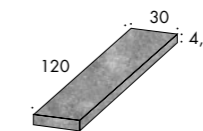


*60·60cm
*23 5/8"·23 5/8"

complementary pieces



gradone - step
*30·120·4,5 cm
* 12"·47"· 7/8"



angolare - corner tile
*30·120·4,5 cm
* 12"·47"· 1 7/8"



battiscopa - skirting
*3,8·60 cm
*2"· 23 5/8"

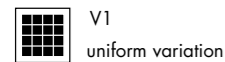
Technical Features

Bla Group

STANDARD	FEATURES	VALUE REQUIRED	DÉCHIRER
ISO 10545/3	water absorption	< 0,5%	0,06%
ASTM C373		< 0,5%	0,06%
EN 101	surface hardness (scala mohs)	> 5	8
ISO 10545/9	resistance to thermal shock	no samples must show visible defects	resistant unaffected
ASTM C484			
ISO 10545/12	frost resistance	no visible alteration	resistant
ASTM C1026		unaffected	unaffected
ISO 10545/13	resistance to chemical attacks	no visible alteration	resistant unaffected
ASTM C650			
ISO 10545/4	breaking strength	≥35 N/mm2	61,2 N/mm2
DIN 51130-04		6÷10° R9 10÷19° R10 19÷27° R11 27÷35° R12 > 35° R13	déchirer neutral R10 déchirer decor R10

LEED CERTIFICATION 4.1
Environmental management system ISO 14000 e ISO 9001

20% recycled material



STANDARD	FEATURES	GLASS
ISO 10545/3	water absorption	none
ISO 10545/9	resistance to thermal shock	resistant
ISO 10545/12	frost resistance	resistant
DIN 51094	colours resistance to fading	resistant
ISO 10545/13	resistance to chemical attacks	resistant

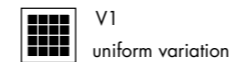
Technical Features

Bla Group

STANDARD	FEATURES	VALUE REQUIRED	DÉCHIRER (LA SUITE)
ISO 10545/3	water absorption	< 0,5%	0,06%
ASTM C373		< 0,5%	0,06%
EN 101	surface hardness (scala mohs)	> 5	8
ISO 10545/9	resistance to thermal shock	no samples must show visible defects	resistant unaffected
ASTM C484			
ISO 10545/12	frost resistance	no visible alteration	resistant
ASTM C1026		unaffected	unaffected
ISO 10545/13	resistance to chemical attacks	no visible alteration	resistant unaffected
ASTM C650			
ISO 10545/4	breaking strength	≥35 N/mm2	61,2 N/mm2
DIN 51130-04		6÷10° R9 10÷19° R10 19÷27° R11 27÷35° R12 > 35° R13	déchirer neutral R10 déchirer decor R10

LEED CERTIFICATION 4.1
Environmental management system ISO 14000 e ISO 9001

20% recycled material



Packing

SIZE	PZ-MQ PCS-SQM	MQ-PZ SQM-PC	PZ-PAL PC-PAL	KG-PZ KG-PC	KG-PAL KG-PAL	MQ-PAL SQMS-PAL
120-120 cm	0,69	1,44	36	38,30	1379	51,84

SIZE	PZ-MQ PCS-SQM	PZ-SCAT PCS-BOX	MQ-SCAT SQM-BOX	SCAT-PAL BOX-PAL	KG-SCAT KG-BOX	KG-PAL KG-PAL	MQ-PAL SQMS-PAL
esagona 120-120 cm	1,07	1	0,93	36	25,10	904	33,48
60-120 cm	1,38	2	1,44	24	38,65	928	34,56
30-120 cm	2,78	2	0,72	48	19,10	917	34,56
60-60 cm	2,77	3	1,08	32	29,00	928	34,56
esagona 60-60 cm	4,30	4	0,92	24	25,15	604	22,08
mosaico random decor 21,4-44,4 cm	10,52	5	0,47	56	12,50	700	26,60
gradone 33-120-4,5 cm	-	2	2,4 ml	-	26,00	-	-
angolare 33-120-4,5	-	1	1,2 ml	-	13,00	-	-
battiscopa 3,8-60 cm	-	10	6 ml	-	5,85	-	-
déchirer glass 30-30 cm	11	11	1,00	60	6,05	363	60,00

Déchirer Collection Awards

awards	Edida	2009
	Best of Neocon	2009
	Home beautiful product	2009
	selected for Adi Design Index	2009
	Good Design	2010
	ICFF Editors Award Material	2011

Eco-Friendly

The collection designed by Patricia Urquiola was made with total respect for the environment: the body used to produce the slabs contains 20% recycled materials calculated in weight (recycled pre-consumption) in compliance with the requirements of UNI EN ISO 14021:2002 Environmental label and declarations and LEED for New Construction & Major Renovations Rating System version 2.2-October 2005. The continuous improvements made to the "CONTINUA" technology used make it suited to green buildings and represent a radical innovation of the production process. Many advantages have been obtained in terms of both quality and health and safety:

- great energy savings compared to conventional systems;
- reduction in environmental impact due to fume emissions which are way below the limits set by the European Union;
- total absence of glazing and reduction in water consumption during processing.

A special cutting-edge purification system allows the water to be 100% recycled;

- recycling of all production waste
- the packaging in the Déchirer collection is made from 100% recyclable materials with no glues.

Déchirer, as with all the Mutina collections, is the result of a production process which totally eliminates V.O.C. (Volatile Organic Compounds): these volatile chemicals easily evaporate at room temperature (benzene, chloroform, ethanol, butane and formaldehyde) and prolonged exposure to them can, in closed environments, cause both acute and chronic effects for the health. These features have all led to the Déchirer production site being awarded environmental certification under UNI EN ISO 14001 and ISO 9001 Environmental Management System Certificate. Déchirer glass, recycled glass mosaic, is produced with an innovative manufacturing process with "zero" environmental impact and a 40% re-use of the raw material.



OPUSTONE.COM

FORT LAUDERDALE | MIAMI | WEST PALM BEACH