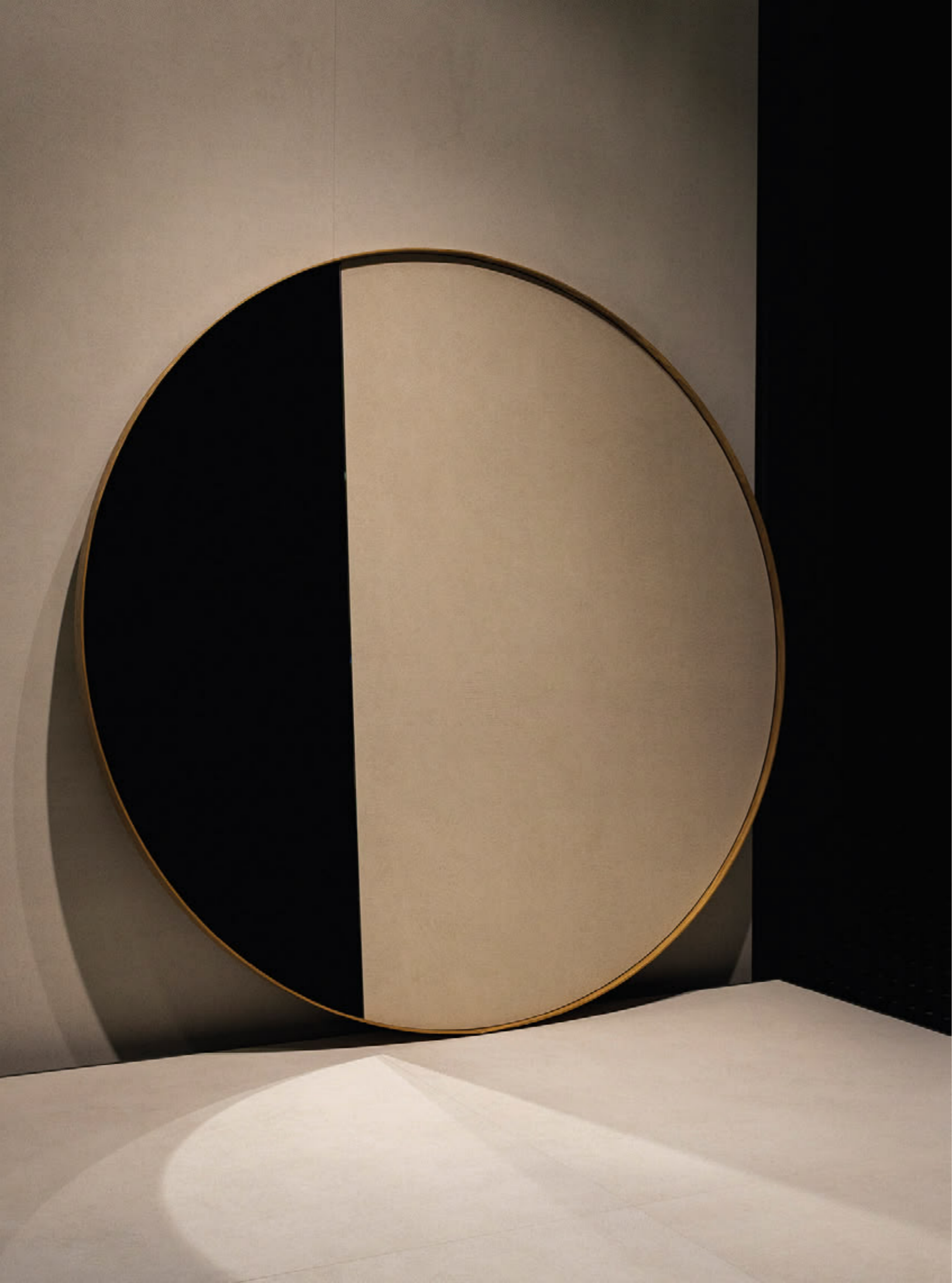


Contemporary Ceramic Surfaces

BERA&BEREN



CONTEMPORARY CERAMIC SURFACES

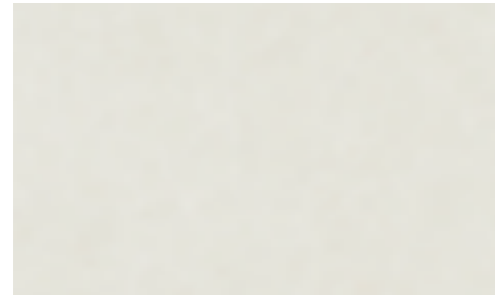
A timeless expression of our essence

The catalogue you are holding, brings together the perfect harmony of design and technology, combining contemporary inspiration with technical excellence. Conceived as a clear and structured resource, it supports the way projects are imagined, specified and developed. Within these pages, materials are presented with a practical and architectural perspective, focusing on performance, compatibility and long-term reliability.

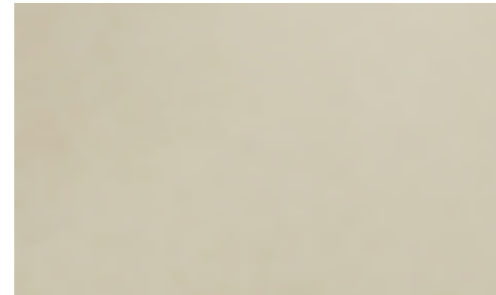
More than a source of inspiration, this catalogue is designed to assist decision-making and to accompany professionals in the creation of spaces that respond precisely to the demands of contemporary architecture and interior de

PORCELAIN & DUCTILE
BERA&BEREN

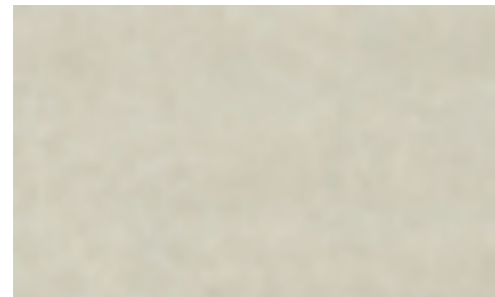
Lusitan&Catalan limestone ceramics



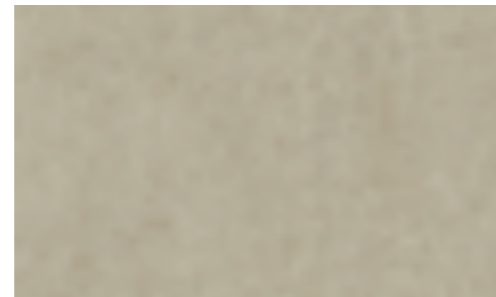
Ice



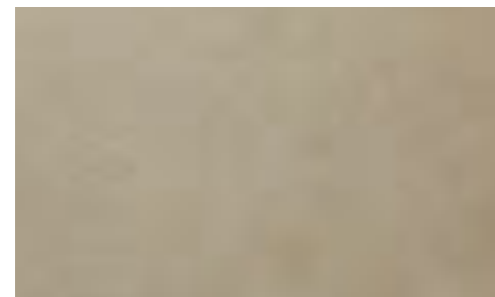
White



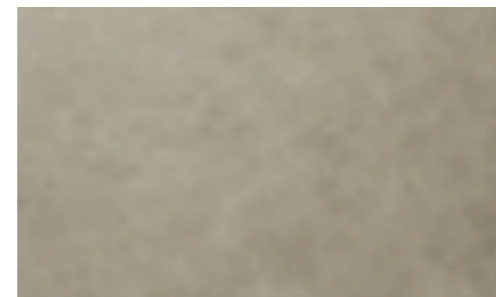
Sand



Light Grey



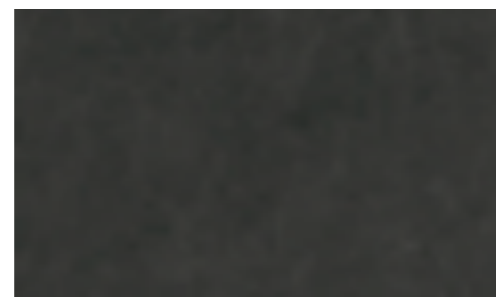
Biscuit



Greige



Dark Grey



Black

IN STOCK TILES	IN STOCK	SIZE IN CM	SIZE IN INCHES
Field	Ice, White, Sand, Light Grey	60x120	24"x48"
Field	Ice	120x120	48"x48"
Ductile Land	Ice, Sand	60x120	24"x48"
Ductile Lane	Ice, Sand	60x120	24"x48"

Certain colors are only available in specific finishes.

SPECIAL ORDER TILES	SIZE IN CM	SIZE IN INCHES
Ductile Land	60x120	24"x48"
Ductile Lane	60x120	24"x48"
Ductile Dot	30x90	12"x36"
Ductile Saw	30x90	12"x36"
Ductile Six	30x90	12"x36"
Field	90x270	36"x106"
Field	120x270	48"x106"
Field	120x120	48"x48"
Field	60x120	24"x48"
Field	90x90	36"x36"
Field	45x90	18"x36"
Field	60x60	24"x24"
Field	30x60	12"x24"
Field	10x60	4"x24"
Field	5x60	2"x24"

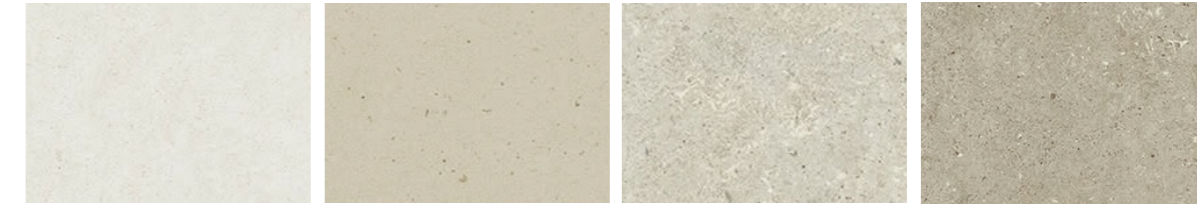
ALL COLORS ARE AVAILABLE FOR SPECIAL ORDER TILES



Colors available

Color Body Porcelain & Ductile 90x270

Destonified V2

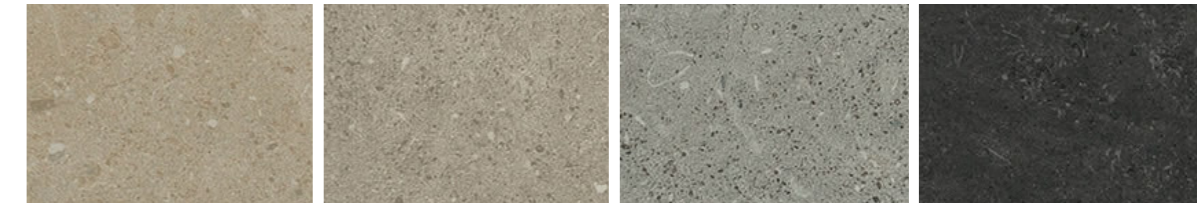


Bera Ice

Bera White *

Beren Sand *

Beren Light Grey *



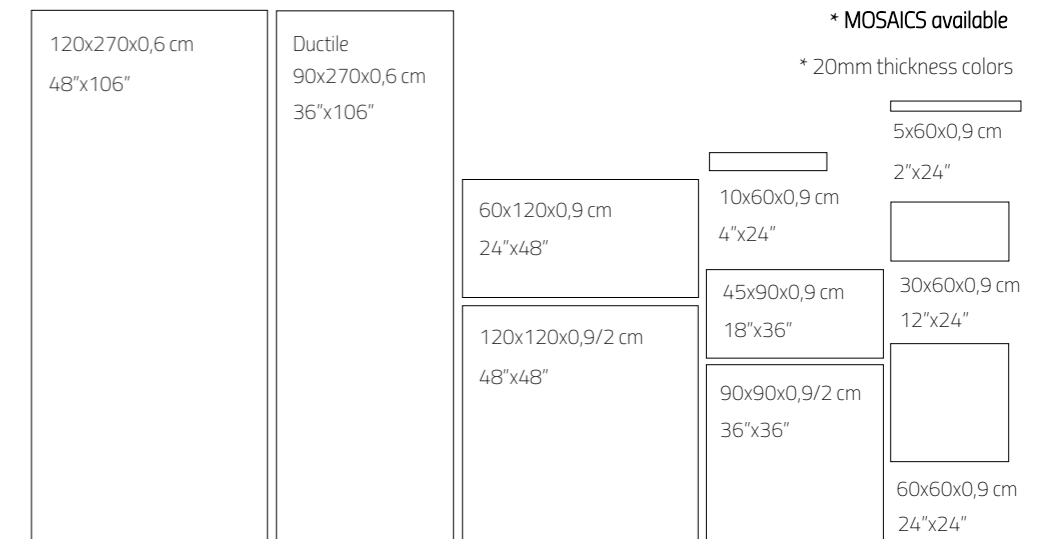
Beren Biscuit *

Beren Greige *

Beren Dark Grey *

Beren Black

Available sizes & finishes



Number of designs by format:
120x270: 7 - 90x270: 7 - 120x120: 14 - 60x120: 14 - 90x90: 16
45x90: 32 - 60x60: 28 - 30x60: 56 - 10x60: 168 - 5x60: 336



Soft Textured Finish Honed Finish Natural Finish Bush Hammered Finish Anti-Slip Finish

Nominal Size	Real Size	Soft Textured C2/R10/CB	Honed	Natural C1/R9/CA	B.H C2/R10/CB	A.S C3/R11/CC	Price Code	Pz/Box	M2/Box	Kg/Box	Box/Pa	M2/Pa	Kg/Pa
Porcelain Tiles													
5x60 cm 2"x24"	4,8x59,8x0,9 cm			•	•	•	5	20	0,57	13,20	60	34,44	832
10x60 cm 4"x24"	9,8x59,8x0,9 cm			•	•	•	10	10	0,59	13,30	60	35,40	838
30x60 cm 12"x24"	29,8x59,8x0,9 cm			•	•	•	30	6	1,07	22,29	48	51,36	1110
60x60 cm 24"x24"	59,8x59,8x0,9 cm			•	•	•	60	3	1,07	22,45	48	51,36	1110
45x90 cm 18"x36"	44,8x89,8x0,9 cm			•	•	•	45	3	1,21	25,22	48	57,93	1236
90x90 cm 36"x36"	89,8x89,8x0,9 cm	•	•	•	•	•	90/90H	2	1,61	33,79	30	48,30	1039
90x90x2 cm 36"x36"	89,8x89,8x2 cm					•	94	1	0,81	37,49	30	24,15	1170
60x120 cm 24"x48"	59,8x119,8x0,9 cm	•	•	•	•	•	62/62H	2	1,43	29,95	36	51,48	1110
120x120 cm 48"x48"	119,8x119,8x0,9 cm	•	•	•	•	•	120/12	1	1,44	30,11	40	57,41	1259
120x120x2 cm 48"x48"	119,8x119,8x2 cm					•	OH121	1	1,44	66,02	16	22,96	1140
120x270 cm 48"x106"	119,8x269,8x0,6 cm	•	•	•			276/276H	1	3,23	45,50	24	77,52	1222
Ductile													
90x270 cm 36"x106"	89,8x269,8x0,6 cm			•			970	1	2,42	29,04	24	58,08	801

IBeren Light Grey Dot

Beren Light Grey Saw

Beren Light Grey Six

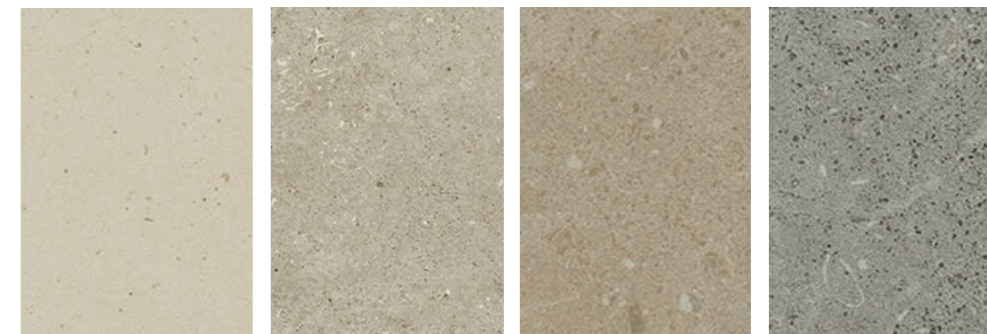
Bera&Beren Ductile

Lusitan & Catalan Limestone ceramics

Colors available

White Body

Destonified V2



Bera White

Beren Light Grey

Beren Biscuit

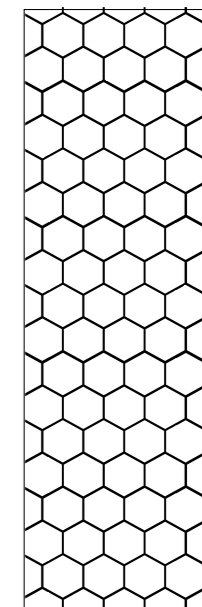
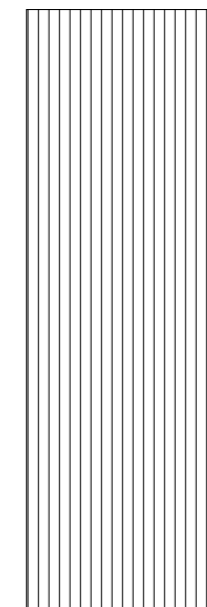
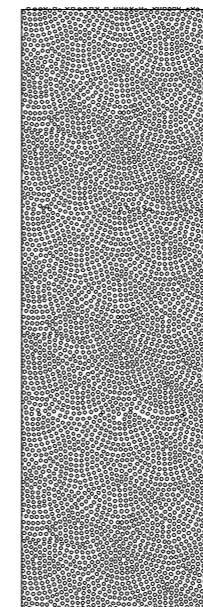
Beren Dark Grey

Available sizes & finishes

Dot

Saw

Six



30x90x0,9 cm

30x90x0,9 cm

30x90x0,9 cm

12"x36"

12"x36"

12"x36"

Rectified

Number of designs by format:

30x90: 16

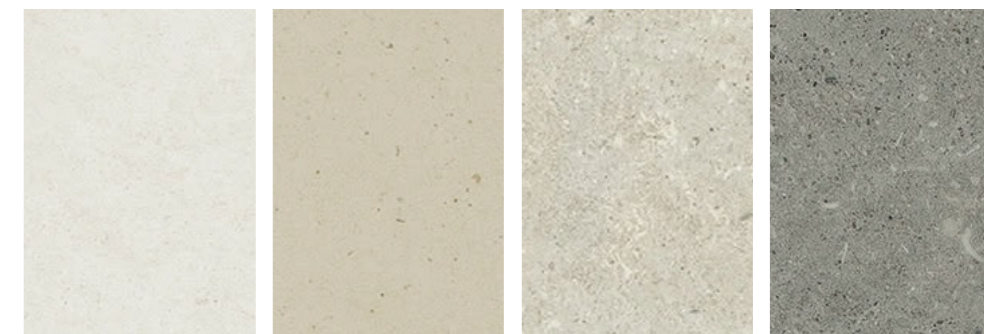
Nominal Size	30x90 cm 12"x36"	Dot	Saw	Six	Pice Code	Pz Box	M2 Box	Kg Box	Box Pa	M2 Pa	Kg Pa
Real Size	29,8x89,8x0,9 cm	•	•	•	320	4	1,07	17,60	54	57,78	974

Bera&Beren Ductile

Colors available

White Body

Destonified V2



Bera Ice

Bera White

Beren Sand

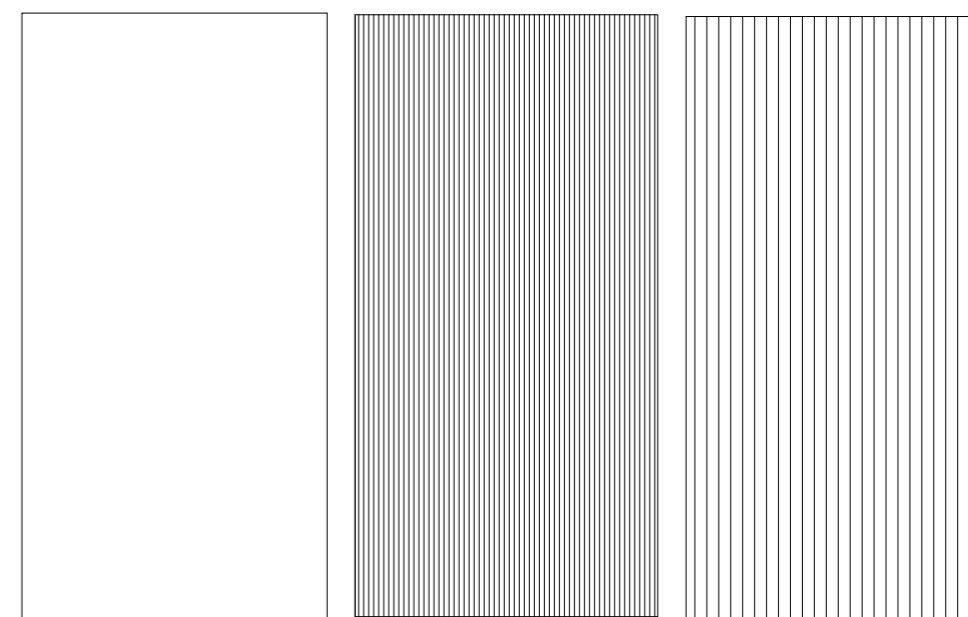
Beren Light Grey

Available sizes & finishes

Base

Lane

Land



60x120x0,6 cm

24"x48"

60x120x0,9 cm

24"x48"

60x120x0,9 cm

24"x48"

Rectified

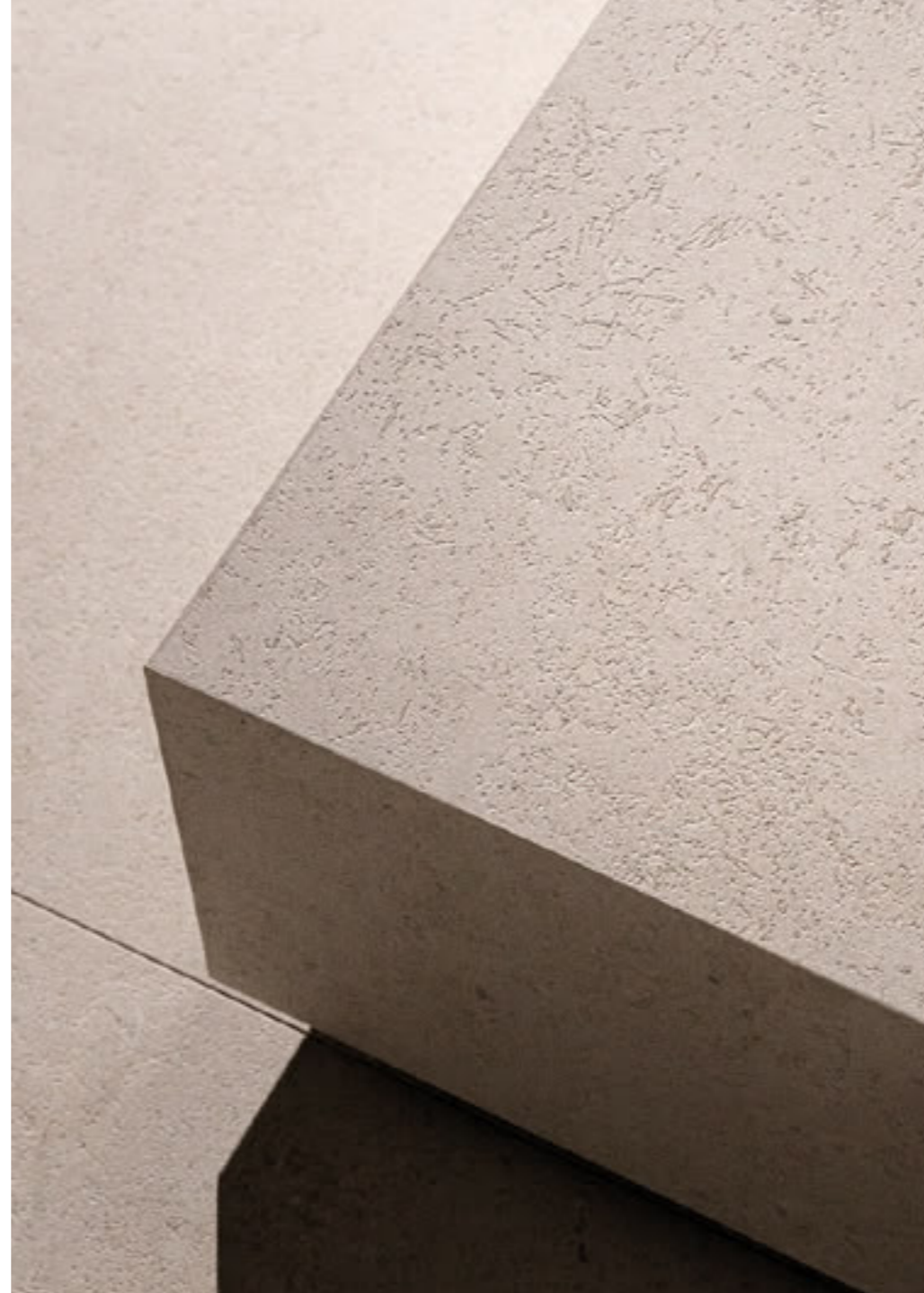
Number of designs by format:

60x120: 14-24

Nominal Size	Real Size	Natural	Soft Textured	Lane	Land	Pice Code	Pz Box	M2 Box	Kg Box	Box Pa	M2 Pa	Kg Pa
60x120 cm. 24"x48"	59,8x119,8x0,6 cm	•	•			620	3	2,15	26,20	35	75,07	947
60x120 cm 24"x48"	59,8x119,8x0,9 cm			•	•	620	2	1,43	22,00	35	50,05	800



Beren, Sand, Soft Textured



Beren, Sand, Honed



Beren, Sand, Natural


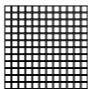
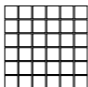
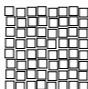
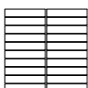




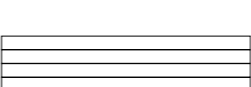


Beren, Light Grey, Ductile Land



MOSAICS

The mosaic is an essential unit: small in scale, infinite in possibility. A module that, on its own, may seem discreet, yet gains new meaning when combined with others. Each individual piece contributes its own rhythm to the composition: elements that repeat, align and interweave to create surfaces rich in nuance and depth. At Livingceramics, we offer mosaic designs that form part of our core catalogue, while also opening the door to new configurations through our customisation and made-to-measure systems. Here, the smallest elements do not limit expression; they multiply it, extending the language of ceramic material.

DECO MOSAIC	<i>Net 24"x24"</i> <i>Real 59,8x59,8 cm</i>	
MOSAIC 25	<i>Net 12"x12"</i> <i>Real 29,8x29,8 cm</i>	
MOSAIC 55	<i>Net 12"x12"</i> <i>Real 29,8x29,8 cm</i>	
MOVED MOSAIC	<i>Net 12"x12"</i> <i>Real 29,8x29,8 cm</i>	
MOSAIC 315	<i>Net 12"x12"</i> <i>Real 29,8x29,8 cm</i>	
MURETO MOSAIC	<i>Net 12"x18"</i> <i>Real 29,8x44 cm</i>	
MURETO 3D MOSAIC	<i>Net 6"x36"</i> <i>Real 15x59,8 cm</i>	
SPIKE MOSAIC	<i>Net 12"x18"</i> <i>Real 29,4x43,5 cm</i>	
MOSAIC 330	<i>Net 12"x12"</i> <i>Real 29,8x29,8 cm</i>	
MOSAIC 590	<i>Net 12"x36"</i> <i>Real 29,8x89,8 cm</i>	

	Price Code	Pz/Box	M2/Box	Kg/Box	Box/Pa	M2/Pa	Kg/Pa
Deco Mosaic	560	4	0,92	20,00	24	22,10	510
Mosaic 25	25	5	0,44	9,00	60	26,40	585
Mosaic 55	55	5	0,44	9,00	60	26,40	585
Moved Mosaic	302	5	0,44	9,00	60	26,40	576
Mosaic 315	315	5	0,44	9,00	60	26,40	585
Mureto Mosaic	300	5	0,44	9,00	40	17,60	404
Mureto 3D Mosaic	595	4	0,35	7,50	20	7,03	175
Spike Mosaic	303	5	0,47	10,75	40	18,80	465
Mosaic 330	330	5	0,44	10,50	60	26,40	675
Mosaic 590	590	3	0,81	18,30	20	16,20	407





20mm THICKNESS

Each project demands materials capable of going beyond functionality. Livingceramics' 20 mm thick porcelain stoneware meets this need: a surface that fuses technical innovation with aesthetic sensitivity, offering safe, durable solutions with timeless beauty to design without limits.

This double technical thickness is specially conceived for outdoor use, where resistance to heavy loads and temperature changes is essential even under the most demanding conditions. Available in 90x90 cm and 120x120 cm formats, and featuring an anti-slip finish, the 20 mm range joins some of our most emblematic collections, reinforcing their versatile and timeless character, and opening the possibility of conceiving in&out spaces with serene, seamless continuity.

Dimensions

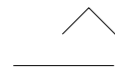


120x120x2 cm
48"x48"



90x90x2 cm
36"x36"

Applications



Our 20mm-thick collections have the same design as the 9mm-thick tile series. This means that matching tiles can be used both indoors and out, ensuring seamless visual continuity. This is an asset in the design of spaces for residential, leisure or public use.



Thanks to the high resistance and inalterability of our 20mm-thick porcelain tiles, they are ideal for places subject to adverse conditions and extreme temperatures, such as covered terraces, gardens or patios.



All our 20mm-thick tile series are non-slip, guaranteeing a safe grip in wet areas or places close to water, such as poolside terraces. Likewise, the tiles are non-porous; that is, they do not absorb water and so they will not crack. What is more, they do not require any kind of special treatment.



In order to ensure visual continuity between indoor and outdoor areas and to fit in with the needs of each individual project, extra-thick special porcelain tile pieces are available, such as step tiles, skirting tiles, corner tiles and finishing pieces. The range's high versatility contributes to projects' visual coherence.



Advantages

Extra-thick porcelain tiles offer numerous benefits, thanks to their versatility and high resistance. These are properties fully able to meet the tough technical demands and aesthetic requirements of outdoor spaces, public areas, and places subject to high loads or stresses. The tiles can be used in false floor systems, creating raised access flooring that provides easy access to plumbing and electricity networks. They are swift and easy to lay, and the perfect choice for outdoor areas.



BREAKING STRENGTH



BREAK RESISTANCE



WATERPROOF MATERIAL



UV RESISTANT



FROST RESISTANT



RESISTANT TO CHEMICAL AGENTS AND DETERGENTS



EASY TO CLEAN



REUSABLE AND ACCESSIBLE



FAST INSTALLATION



EASY TO INSTALL



COLOUR STABILITY

Systems

CONVENTIONAL TILE-LAYING SYSTEMS

This is the most common system for creating flooring able to withstand high pedestrian traffic or moving vehicles in garages or up and down entrance ramps. The tiles are laid in a similar way to standard porcelain tiles, although the necessary joints for outdoor areas must be inserted.

ON LAWNS, SAND OR GRAVEL

These dry-installation systems are very common in outdoor areas. The main benefit is the swift installation method with no need for any kind of chemical adhesive. This makes it both simple and economical. Whether the tiles are to be laid on grass, gravel or sand, they must be supported by an approximately 6cm-thick bed of gravel with a 4 to 8mm particle size.

ON PLOTS

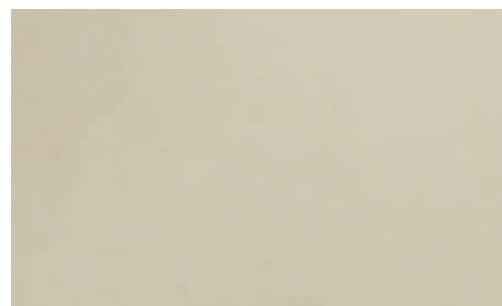
Our 20mm-thick tiles can be rested on pedestals to create raised-access flooring (RAF). This swift, adhesive-free installation system allows networks to be concealed under the floor, such as wiring or pipes. Used in conjunction with conventionally laid tile surfaces and thanks to the large formats, visual continuity can be ensured; for instance, to create terraces or in projects for the contract market.



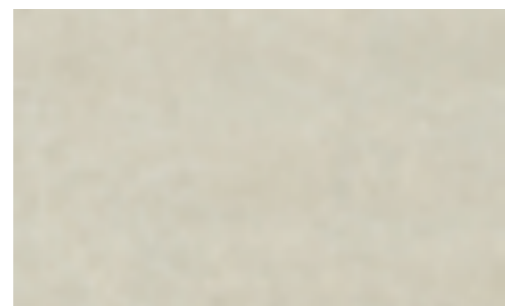
Available products

BERA&BEREN

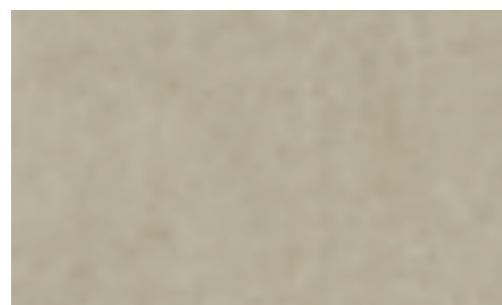
Lusitan&Catalan limestone ceramics



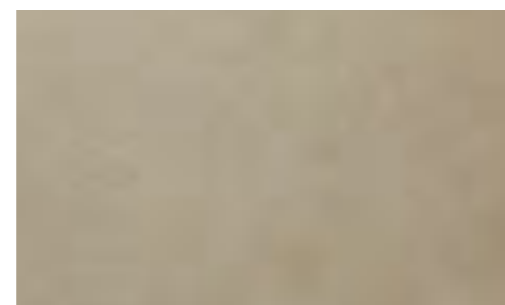
White



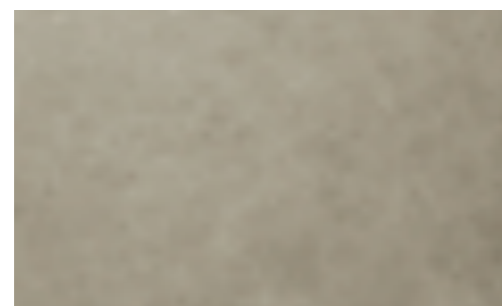
Sand



Light Grey



Biscuit

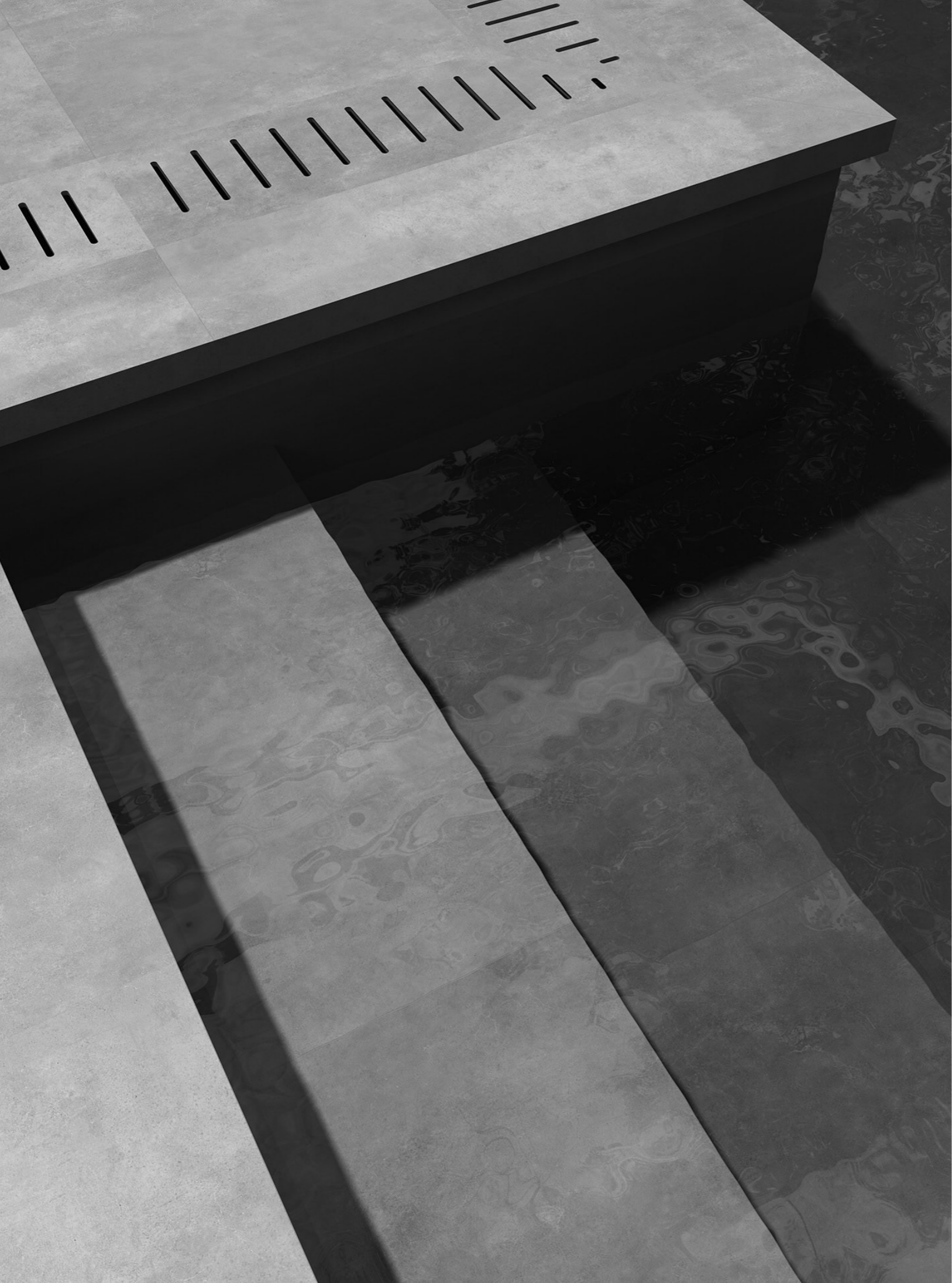


Greige



Dark Grey

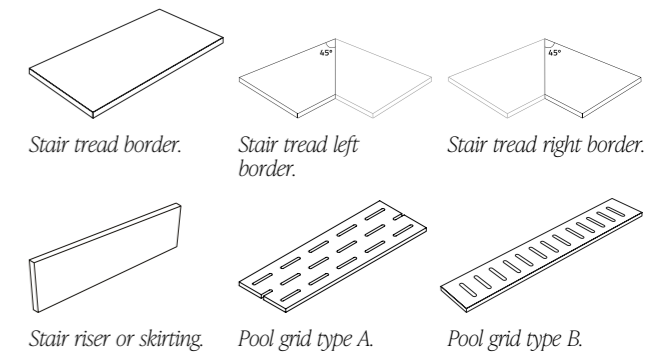




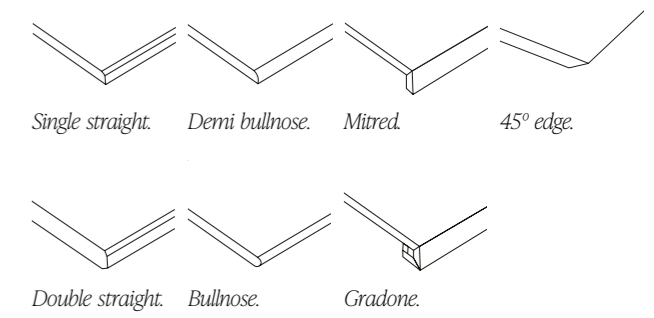
TECHNICAL PIECES

Every project presents its own requirements. For this reason, our way of working always begins with adaptation, developing a system of technical pieces tailored to the dimensions, uses and details each project demands. As a starting point, we propose a selection of standard solutions. From there, formats, edge profiles and finishes can be freely combined to create bespoke technical pieces, fully aligned with the design of each project.

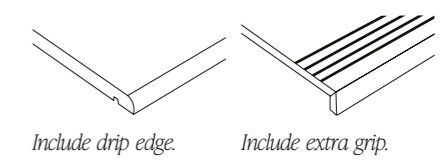
TYPE OF PIECE



TYPE OF EDGE



EXTRA





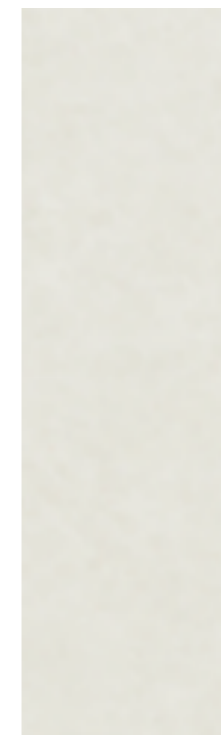
The architecture of detail

Product equivalencies Lithotech



LITHOTECH

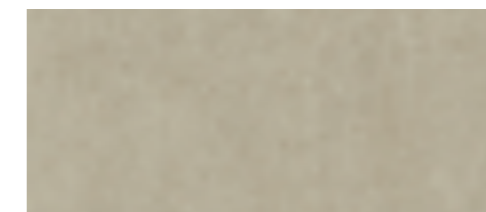
Under a shared philosophy and a singular way of understanding design, we present Lithotech: our high-performance technical porcelain solution, conceived to offer functional, stable, and visually refined surfaces for architecture and interior design. What is Lithotech? A technical porcelain produced through advanced ultra-compaction processes and high-temperature thermal treatments. This combination achieves superior levels of strength, chromatic stability, and durability while maintaining a consistent appearance throughout the entire thickness of the slab. The result is a non-porous, hygienic material that is easy to clean and highly resistant to scratching, staining, chemical agents, and high temperatures – properties that make it a solid and stable solution even under the most demanding conditions of use. Yet the technical capacity of Lithotech goes beyond its manufacturing process. Its versatility expands the boundaries of design: from kitchen and bathroom countertops to technical furniture, wall cladding, large-format surfaces, and bespoke architectural applications. Its uniform composition and the visual continuity of its edges enable the creation of projects with complete aesthetic and functional coherence.



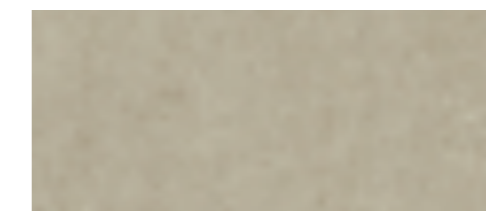
ICE | Natural | 12-6 mm



SAND | Honed | 12 mm



Natural



Soft Textured



BLACK | Natural | 12-6 mm

Installation Recommendations

recommends consulting the norms that regulate the placement of ceramic tiles. It is essential, before any installation, to carefully read the UNE 138002 and UNE 12004 standard, and to attend to the speci ed in order to achieve a correct placement of the ceramic tile. We indicate below, a summary of the most important points to take into account:

- [01] Conformity of tone and caliber of the material.
- [02] Make sure that the area to clad is clean and dry.
- [03] Cement-based adhesive should be used for each type of product; porcelain color body or white body.
- [04] The area to clad must be uniformly leveled. The use of leveling systems is mandatory for a perfect installation.
- [05] A 2 mm minimum joint is recommended to place the pieces correctly.
- [06] The rectangular formats cannot be placed united to any more than 1/4 of the piece.
- [01] The double bonding technique must always be used.
- [02] This material requires the use of C2 class adhesives (bicomponent type S2).
- [03] The appearance of air pockets between tile and substrate should be avoided by the systematic knocking of the tile with a rubber trowel. This will avoid tensions and breaks after the material has been set.
- [04] The use of speci c tools for installing ceramic tiles is mandatory. Consult your trusted supplier to receive instructions on the correct handling of these tools and their needs.

Cleaning & Maintenance

Once placed and grout cleaning equipment is mandatory. Improper cleaning may leave traces of products used in the placement or the protection of the tiles, as cements, resins epoxilicas, grout, waxes or fats. For optimal cleaning after placement for cases of intense and stubborn dirt accumulated over time, and for maintenance, required to use the right products. The following table shows some of the recommendations.

FILA	FABER	Maintenance in general.
FILACLEANNER	FLOOR CLEANER	
FILACRIO	EPOXY CLEANER	Water epoxy, vitrified or resin board
DETERDEK *	CEMENT REMOVER	Waste concrete placement, limescale, metals stripes, oxide deposits. * DETERDEK not suitable for polished surfaces (Honed finish), For these surfaces, we recommend CEMENT REMOVER 2.0.
FILASOLV	DEEP DEGREASER	Candle wax, tree resins, tape residue, tar residue.
FILANOPAINT STAR	GRAFFITI REMOVER	Painted gra ti, spray acrylic, alkyd and synthetic nitros.
FILAPS87	DEEP DEGREASER	Drinks, food, fats, oils, rubber, dyes, marker, acrylic paint drops.

The slab installation requires the use of tools and speci c training by the installer. In addition to the above, these are some of the recommendations to take into account in the installation of large tile formats:



Cutting detail with guide on slab



The tiles' ductile properties make them easy to cut.

