

# TOUCHSTONE

@ *Opustone*<sup>®</sup>

20

15







# STONESPIRATION

Exceptional design begins with exquisite surfaces. Crafted by nature or engineered by man, Opustone's products are made to last, to resonate, and to inspire. Discover your muse within, and let it lead you through the wealth of choices available, to galvanize and perfect the design of your spaces.

A photograph of an Opustone storefront at night. The building has a dark, textured facade. The 'Opustone' logo is illuminated in white with a yellow underline. Large glass windows show the interior with warm lighting and string lights. A palm tree is visible on the left, and a hedge runs along the bottom of the building.

**Opustone**

20

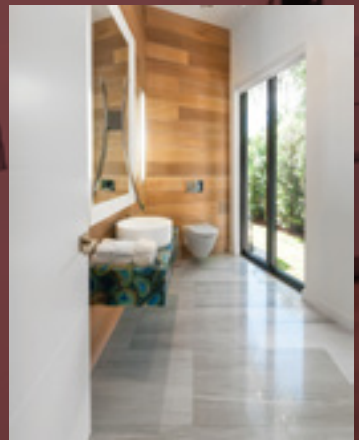
15





# HOME

It's foundational to one's lifestyle, the deeply personal spaces in which we reside. Home interiors are not merely décor, they become outlines to our existence, defined by tones, textures and patterns wrought into incredible surfaces, enduring in timeless fashion, bearing witness to the lives within. Our homes become us as we become them.



Elegance is an inevitable byproduct of designing with Opustone. With simplicity and grace, the immutable, solid stone surfaces effortlessly bestow a sense of permanence and stability, creating deep comfort that permeates every space. **▮**

**"VEGA**  
Santamargherita -  
Engineered Stone  
Tabletop

**"COLONIAL WHITE**  
Natural Stone - Marble  
Floor





**"REVIO**  
Wind  
Floor





FROM SOLE TO SOUL,  
OPUSTONE DELIVERS TIMELESS  
FLOORING, CRAFTED NOT  
ONLY TO ENDURE, BUT  
TO TRANSCEND.

Character emanates from within. From natural stones as well as marvelously crafted engineered porcelain, our surfaces speak volumes, filling rooms with warmth, vitality, emotion, spirit, and an unmistakable charm. ***O***



TOP OF THE LINE FOR THE  
TOP OF YOUR GAME.

**"CALACATTA GOLD BORGHINI**

Natural Stone - Marble  
Countertop - Backsplash





Our magnificent, large slabs allow countertops and vertical surfaces to become true showpieces, so beautiful they to beg to be touched. This is your art at state-of-the-art. Brilliant design set free to inspire, to dream, to think in stone. **D**

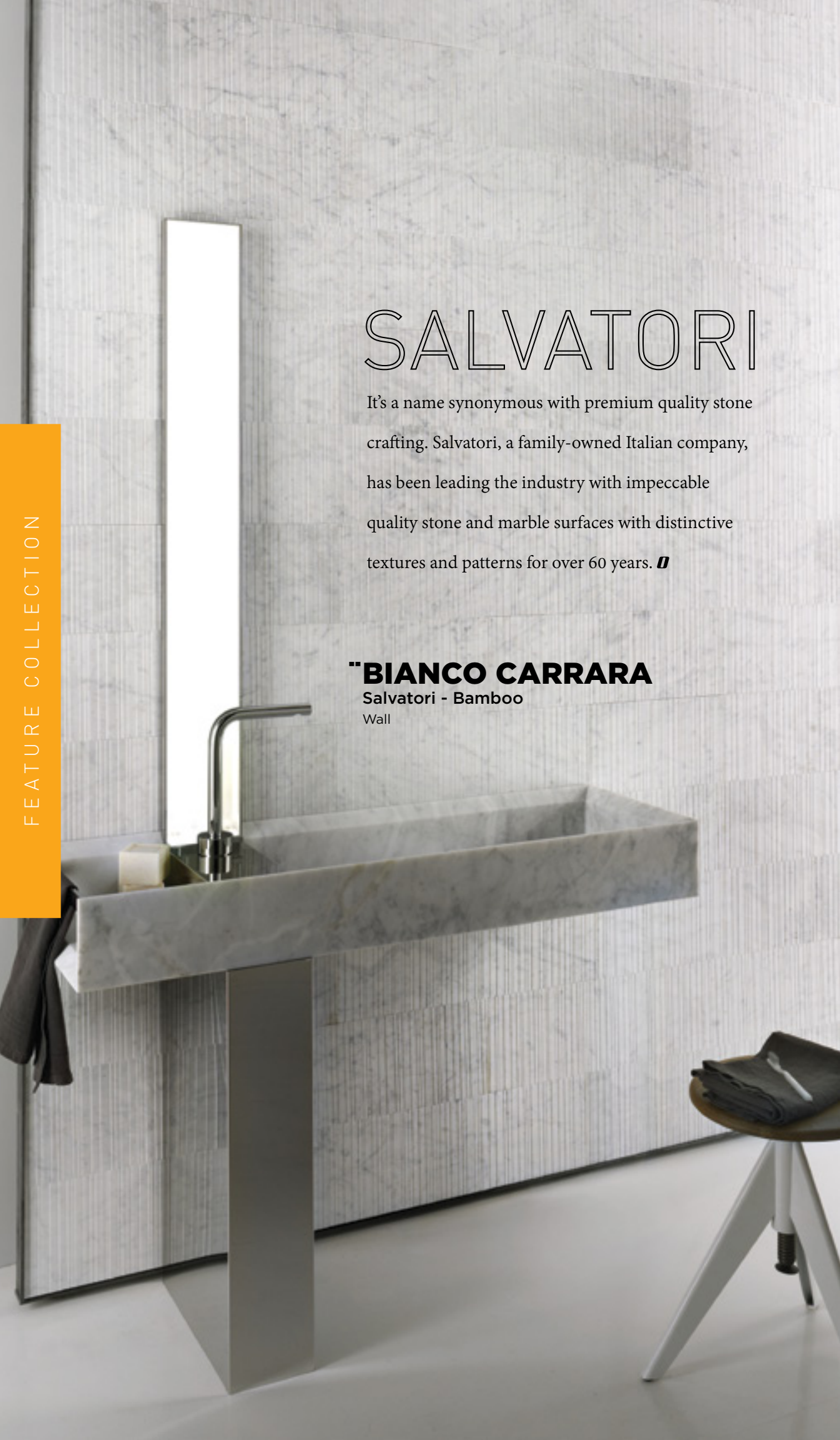
# SALVATORI

It's a name synonymous with premium quality stone crafting. Salvatori, a family-owned Italian company, has been leading the industry with impeccable quality stone and marble surfaces with distinctive textures and patterns for over 60 years. **▮**

## "BIANCO CARRARA

Salvatori - Bamboo

Wall







THE COLLECTION



◀ BAMBOO - CREMA D'ORCIA

◀ BAMBOO - BIANCO CARRARA

◀ LITHOVERDE PIETRA D'AVOLA

◀ BAMBOO - GRIGIO VERSILIA

◀ PIETRA D'AVOLA

◀ LITHOVERDE- PIOMBO

# "BIANCO POLARE

Lapitec

Floor

FEATURE COLLECTION

# LAPITEC

One of the most innovative ceramic products available, our large-sized, Lapitec sintered stone slabs fuse Italian design sensibilities with modern materials technology to create a product of unmatched beauty and durability, both indoors and out. **||**



**Lapitec**<sup>®</sup>  
Prestigious Italian Surface  
THE COLLECTION



# CLASSIC QUARTZ

Exotic Precioustone

Feature Wall







# EMERGE

From the increase in condominiums to the growth of luxury and commercial spaces throughout Florida, designers have more reason than ever to think outside the box in forging their designs.

Opustone is rich in solutions that take interiors to the next level, building upon investment while crafting every space into something both meaningful and resonant. **▮**



## "VEGA

Santamargherita Engineered Stone  
Countertop

## SANTAMARGHERITA

Located in Verona, Italy, Santamargherita is famous for creating exquisite engineered stone surfaces that elevate spaces as only Italian styling can. The finely-crafted quartz and marble-based surfaces represent the absolute cutting-edge in beautiful and durable agglomerate design. **D**

## "AREIA

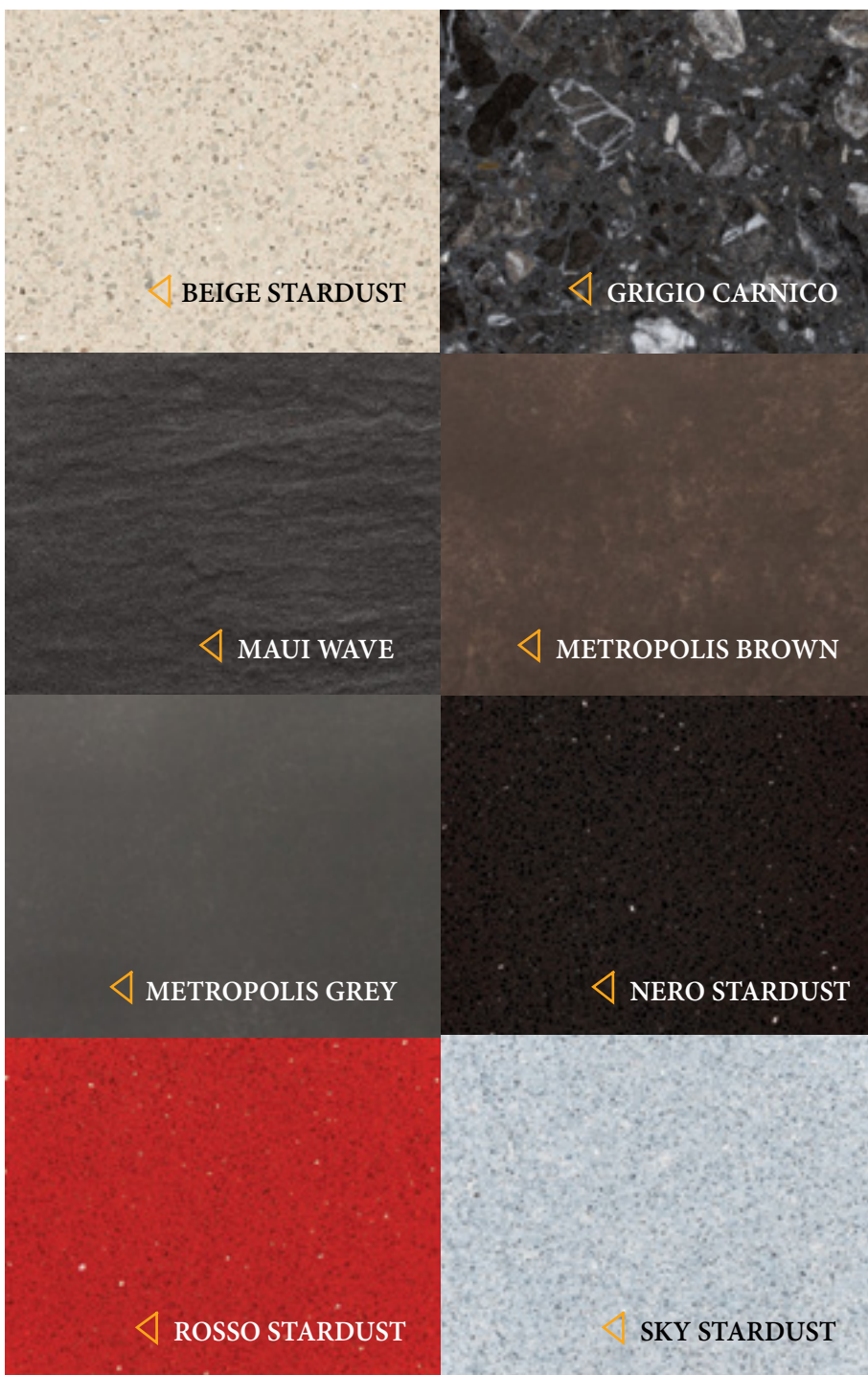
Avalon Porcelain  
Floor



# santamargherita

THE ORIGINAL ITALIAN SURFACE

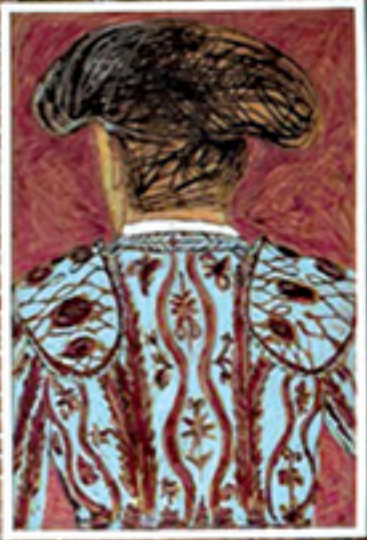
## THE COLLECTION





# "TERRA

Noce  
Floor



FEATURE COLLECTION

## AVALON PORCELAIN

Much of the beauty of wood and natural stone surfaces comes from the distinctiveness of each individual piece. With our Avalon line, modern porcelain engineering replicates that unique appearance, creating spectacular and extremely durable tiles & panels perfect for both flooring and vertical spaces, inside and out. **D**



# avalon

porcelain

THE COLLECTION

mu



◀ MUSE

pa



◀ PALISADE

pl



◀ PLAYWOOD

po



◀ PORTLAND

ac



◀ ACTION

ak



◀ AKARI

wl



◀ WOODLAND

vo



◀ VOGUE

## "BIANCO CARRARA

Product 2" x 4"

Backsplash

# QUINTESSA MOSAICS

Stunning patterns provoke the imagination while individual elements attract the eye. Our proprietary line of mosaic tiles is crafted from the very finest stone and ceramic pieces, to add unique blends of tone and texture for true versatility in your design palette. **▮**



# QUINTESSA MOSAICS®

THE COLLECTION



◀ CALACATTA GOLD HEXAGON



◀ BIANCO CARRARA HEXAGON



◀ WHITE PEARL SHELLSTONE SQUARE



◀ CALACATTA GOLD HERRINGBONE



◀ BINACO CARRARA SQUARE



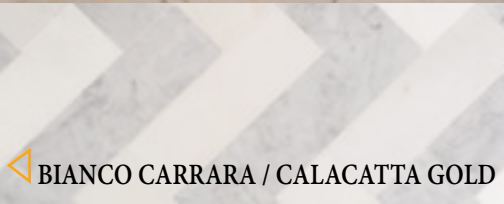
◀ WHITE PEARL SHELLSTONE BRICK



◀ CREMA MARFIL SUBWAY



◀ CALACATTA GOLD SQUARE



◀ BIANCO CARRARA / CALACATTA GOLD



◀ CREMA MARFIL ANSA



◀ CALACATTA CONTEMPO



◀ VENA GRIGIO CONTEMPO



◀ BELUGA HERRINGBONE



◀ BLACK PEARL




◀ GREY PEARL



◀ BELUGA HEXAGON

FEATURE COLLECTION

# PERPETUA TERRAZZO

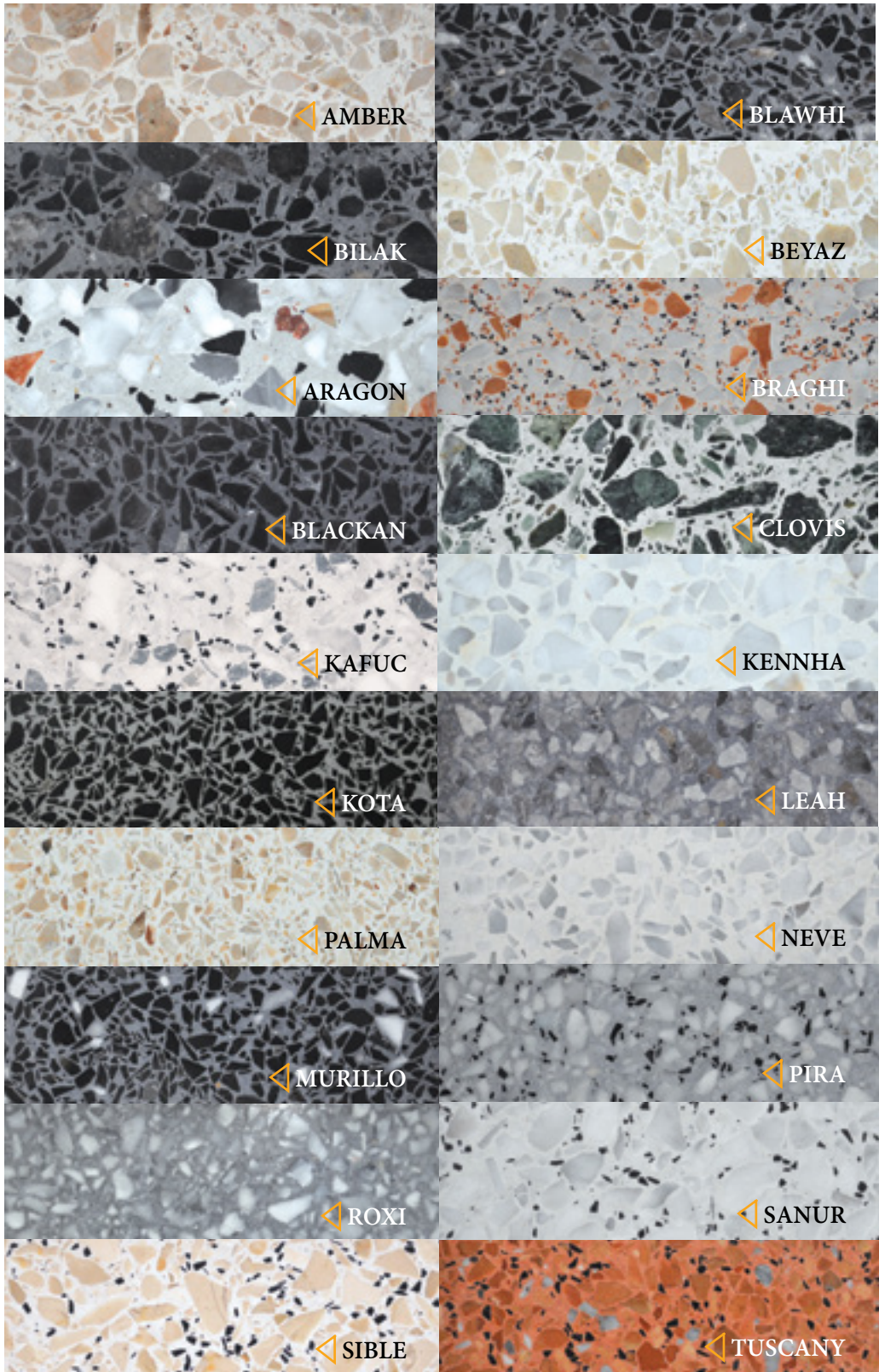
Exquisitely engineered, our premium quality Perpetua line is built to last. State-of-the-art composite materials provide unsurpassed beauty, versatility, and durability, in a rich palette of varied hues, tones, and complexities. Only from Opustone. 

**BLAWHI**  
Perpetua Terrazzo  
Floor



# PERPETUA™

TERRAZZO  
THE COLLECTION



# SHOWCASE

ON VIEW @ OPUSTONE







**"NORIATA**  
Limestone



◁ **MAKE A SPLASH**

Discover true beauty in the simplicity of glorious Noriata natural limestone. Heavy and granular, it's excellent for spaces indoors and out



**"SILVER EGEO**  
Marble

◁ **GREY MATTER**

One of the world's most striking and mesmerizing marbles, our large slab Silver Egeo is great for adding features to that inspire deep thought.

▷ **UNLEASH YOUR DESIGN**

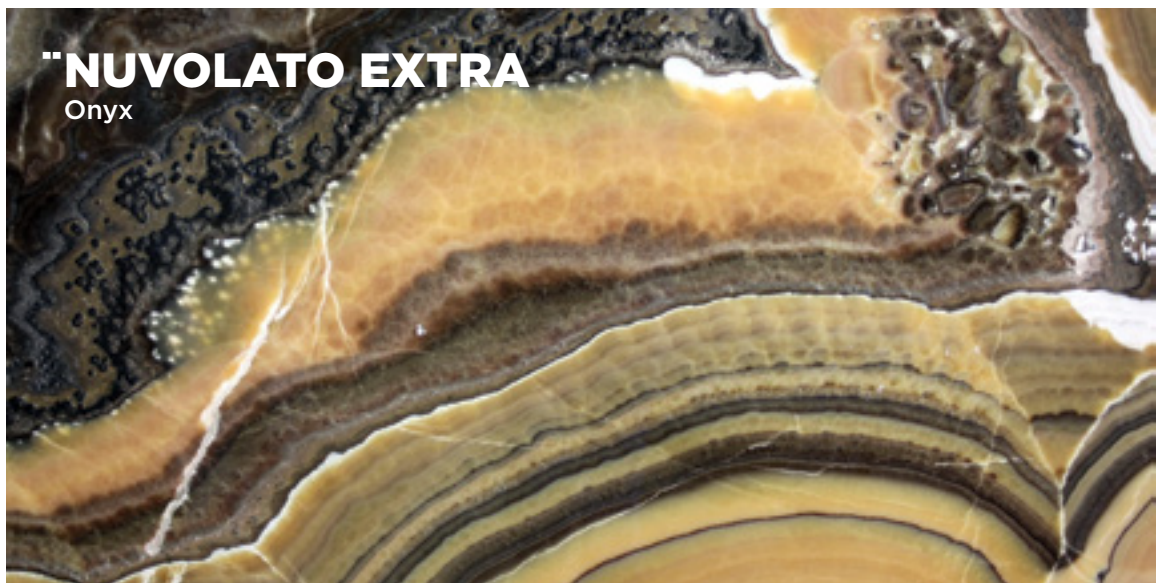
Add distinctive touches with this sultry black granite smoothed to an antique surface and impeccably textured with patterns inspired by nature.



**"NATURA BLACK**  
Natura

▽ **BEYOND PLANET EARTH**

Finding a more interesting showpiece than these grand slabs of natural onyx can be as difficult as believing they were excavated from this world.



**"NUVOLATO EXTRA**  
Onyx



# "NETTUNO BORDEAUX

Granite

## ▷ GET GRANULAR

These beautifully polished slabs truly unveil the sublime, speckled fascination of granite, while inviting you to become lost in its depths.



# "FUSION

Quartzite



# "AGATONA

Antolini Precioustone

## △ SWEPT AWAY

Forged in the incomprehensible pressures of earth's tectonic depths, Fusion quartzite is truly stunning with its kaleidoscopic majesty.

## ▷ CROWNING JEWEL

Seamlessly fused slices of captivating blue agate form these translucent slabs of Agatona, which boldly spring to life with backlighting, inducing true awe.







## "OCEAN BLACK VC Travertine

- ◊ **NATURAL ART**  
Words fail to describe the resplendent detail of Ocean Black VC travertine, or the powerful effect of this natural stone when presented in a canvas-sized slab.
- ◊ **INSPIRED PAIRING**  
Combinations like Shellstone mosaic tiles and the wood-like Vena Grigio marble await only your imagination. Think in stone.



## "WHITE PEARL SHELLSTONE Quintessa Mosaics

## "VENA GRIGIO Marble



TOUCHSTONE

@ *Opustone*<sup>®</sup>

MIAMI | FT LAUDERDALE | JACKSONVILLE  
888.900.6787 OPUSTONE.COM